

# KS2 Study Club

## Maths Week 2 Workbook

Questions



# KS2 Study Club

## Topics

### Welcome to week 2 of your 10 week Study Club!

Every week you'll get a practice workbook to work through a range of topics, taken from our KS2 Maths Intermediate Course.

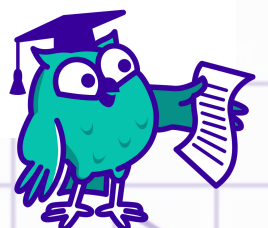
We've also included links to 2 of our expert tutorial videos on some of these exact questions. That way, if you get stuck, you can try watching one of our tutorial videos with our Maths expert Patricia.

For full access to all of the corresponding videos sign up for a SchoolOnline subscription from £8.99 a month.

In next week's email we'll send you the answers to this workbook to download *PLUS* a brand new workbook to practice.

## Your week 2 workbook topics are:

- Calculations questions including Subtracting Decimals
- Measure questions including Units and Conversions



## Calculations 2

Arithmetic - Subtraction

### 2016 Paper 1 Arithmetic

<b>18</b>	$122,456 - 11,999 =$	<input type="text"/>	1 mark

Subtracting Decimals

### 2019 Paper 1 Arithmetic

<b>21</b>	$9 - 1.9 =$	<input type="text"/>	1 mark

Subtraction - Decimals

## 2017 Paper 1 Arithmetic

<b>21</b>	$9 - 3.45 =$	<input type="text"/>	1 mark

Arithmetic - Decimal Subtraction

## 2016 Paper 1 Arithmetic

<b>21</b>	$4 - 1.15 =$	<input type="text"/>	1 mark

Arithmetic - Decimal Subtraction

2016 Paper 1 Arithmetic

17

$$125.48 - 72.3 =$$

1 mark

# KS2 Study Club

Expert tutorial



**Need some extra help? That's what we're here for!**

In this video Patricia will explain how to answer the first question in the Calculations section of your workbook (Q18) which looks at a subtraction question.

Grab your pen and paper and remember to take notes! If you want more access to awesome videos like this, [sign up for a full SchoolOnline subscription here.](#)



## Measure 1

### Units and Conversions

#### 2019 Paper 3 Reasoning

15



The International Space Station orbits the Earth at a height of 250 miles.

What is the height of the International Space Station in **kilometres**?

Use 8 kilometres equals 5 miles.

km

1 mark

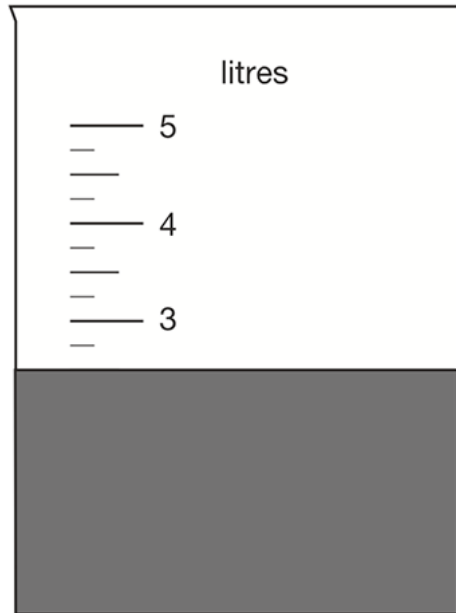
Volume



## 2019 Paper 2 Reasoning

7

Jack pours some dark paint into a container.



In litres, how much paint is in the container?

litres

1 mark

Millilitre - Problem



# KS2 Study Club

Expert tutorial



**Need some extra help? That's what we're here for!**

In this video Patricia will explain how to answer the last question in the Measure section of your workbook (Q11) which looks at a Millilitre Problem question.

Grab your pen and paper and remember to take notes! If you want more access to awesome videos like this, [sign up for a full SchoolOnline subscription here.](#)

