

KS2 Study Club

Maths Week 7 Workbook

Questions



KS2 Study Club

Topics

Welcome to week 7 of your 10 week Study Club!

Every week you'll get a practice workbook to work through a range of topics, taken from our KS2 Maths Intermediate Course.

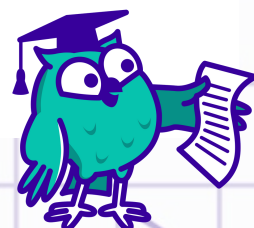
We've also included links to 2 of our expert tutorial videos on some of these exact questions. That way, if you get stuck, you can try watching one of our tutorial videos with our Maths expert Patricia.

For full access to all of the corresponding videos sign up for a SchoolOnline subscription from £8.99 a month.

In next week's email we'll send you the answers to this workbook to download *PLUS* a brand new workbook to practice.

Your week 7 workbook topics are:

- Division Calculations
- Prime Numbers



Calculations 5 - Division

Arithmetic - Division

2016 Paper 1 Arithmetic

15	$486 \div 3 =$	<input type="text"/> 1 mark


Arithmetic - Division

2016 Paper 1 Arithmetic

22	$1,320 \div 12 =$	<input type="text"/> 1 mark


Division - Whole Numbers

2017 Paper 1 Arithmetic

17	$581 \div 7 =$ 	<input data-bbox="1370 642 1446 716" type="checkbox"/> 1 mark
-----------	--	--

Arithmetic - Decimal Division

2016 Paper 1 Arithmetic

20	$0.9 \div 10 =$ 	<input data-bbox="1370 1417 1446 1491" type="checkbox"/> 1 mark
-----------	---	--

KS2 Study Club

Expert tutorial



Need some extra help? That's what we're here for!

In this video Patricia will explain how to answer the last question in the Division Calculations section of your workbook (Q20).

Grab your pen and paper and remember to take notes! If you want more access to awesome videos like this, [sign up for a full SchoolOnline subscription here.](#)

Prime Numbers 1

Square and Prime Numbers

2017 Paper 3 Reasoning

18

A **square** number and a **prime** number have a total of 22

What are the two numbers?

$$\begin{array}{ccc} \boxed{} & + & \boxed{} = 22 \\ \text{square} & & \text{prime} \\ \text{number} & & \text{number} \end{array}$$

1 mark

Prime Numbers

2019 Paper 2 Reasoning

18

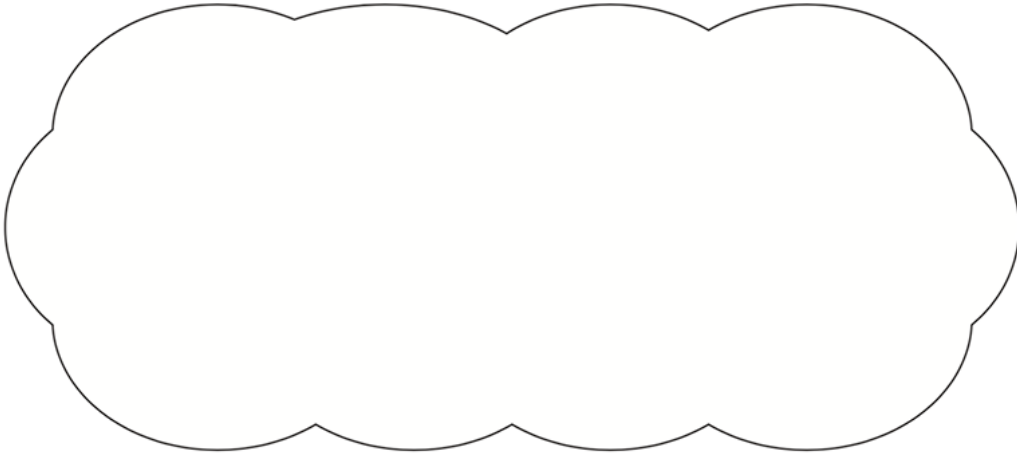
Circle the **prime** number.

95

89

87

Explain how you know the other numbers are **not** prime.



1 mark

KS2 Study Club

Expert tutorial



The screenshot shows a video player interface. At the top left, it says "Key stage 2 Mathematics Paper 3: reasoning" and "18". The main content area contains a math problem: "A square number and a prime number have a total of 22. What are the two numbers?". To the right of the text is a diagram with two boxes: the first is labeled "square number" and the second is labeled "prime number", with a plus sign between them and "=22" to the right. Below the text, the handwritten equation $1^2 = 1$ is visible. A large purple banner with the text "Click to play!" is overlaid on the video player, with a white arrow pointing to the play button.

Need some extra help? That's what we're here for!

In this video Patricia will explain how to answer the first question in the Prime Numbers section of your workbook (Q18).

Grab your pen and paper and remember to take notes! If you want more access to awesome videos like this, [sign up for a full SchoolOnline subscription here.](#)

