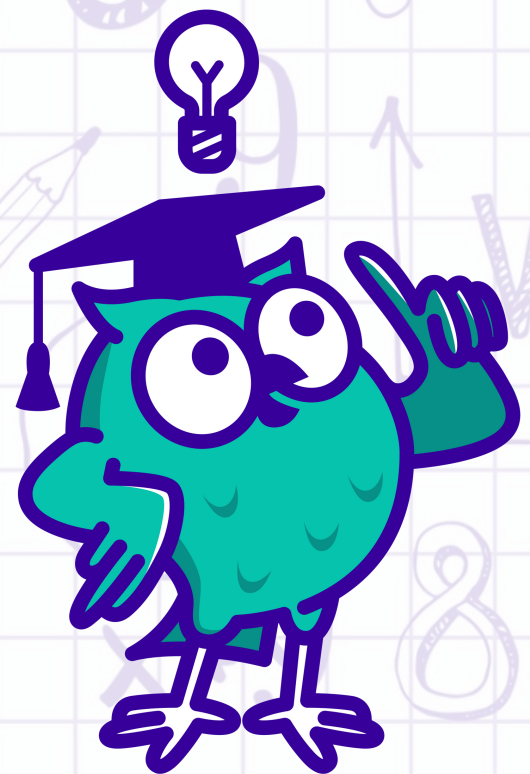


KS2 Maths Scheme of Work

6 Week Trial



KS2 Maths

6 Week Trial scheme of work

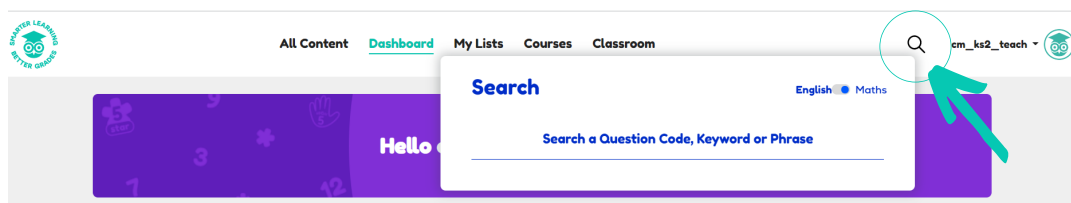
How to use this scheme of work?

These schemes of work have been created from our 6 weeks grade boost course, designed for your students by our expert examiners to take weekly units across a range of topics. In this booklet, you'll find **6 units of work**, each with a number of subtopics so your students are able to practise a good range of work.

To utilise this within your trial you can **add all of the questions in each unit to one list** and then **assign your class or focus group the list** as an assignment for them to complete. In doing so you will be able to track who has completed the work, their progress and where their challenges may be.

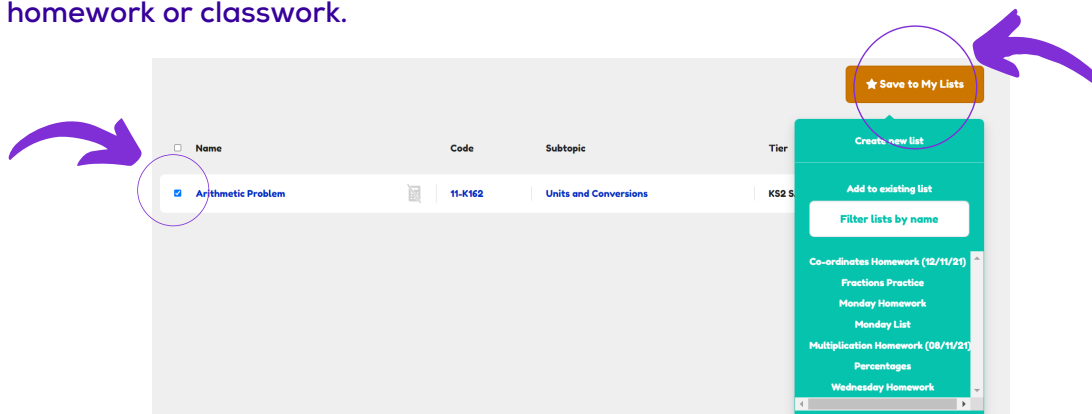
Finding the questions

- Each question has a **unique question code reference number**.
- The question code will look similar to this: 11-K162
- You can find these questions and add them to a list by **using the Search Function**.
- Click the magnifying glass in the top right-hand corner of the page and enter the question code from the units listed on the next pages to find the corresponding question.



Saving to My Lists

- Once you have found the question you can then select the question using the **multi-select button** and **add it to a list via the orange 'save to my lists' button**.
- Create a list for each unit which you can then assign to your class for their homework or classwork.



For more information on how to create assignments watch our tutorial videos here.

Unit 1

Calculations

- Arithmetic - Multiplication. **Question Code: 10-K161**
- Arithmetic - Problem. **Question Code: 19-K183**
- Word Problem - **Question Code: 23-K192**

Geometry

- Angle Rules- **Question Code: 13-K193**
- Degrees- **Question Code: 16-K172**
- Mirror Line- **Question Code: 1-K182.**

Measure

- Arithmetic Problem- **Question Code: 11-K162.**
- Units and Conversions- **Question Code: 15-K193.**
- Millilitre - Problem- **Question Code: 11-K183.**

Number and Place Value

- Numbers- **Question Code: 1-K162.**
- Rounding Off- **Question Code: 2-K193.**
- Days in a Month- **Question Code: 14-K193.**

Statistics

- Graph- **Question Code: 4-K173.**

Unit 2

Calculations

- Written Multiplication- **Question code: 30-K191.**
- Arithmetic - Addition- **Question code: 2-K161.**
- Word Problem- **Question code: 19-K193.**

Fractions, Decimals and Percentages

- Arithmetic - Fraction Addition- **Question code: 31-K161.**
- Fractions, Decimals and Percentages- **Question code: 19-K191.**
- Number Line- **Question code: 4-K182.**

Measure

- Timetables- **Question code: 9-K163.**
- Area Comparison- **Question code: 20-K173.**
- Area of Triangles- **Question code: 17-K163.**

Number and Place Value

- Ordering Numbers- **Question code: 4-K193.**
- Rounding - **Question code: 10-K172.**
- Rounding Numbers- **Question code: 15-K163.**

Ratio, Proportion and Algebra

- Percentage Problems- **Question code: 33-K191.**
- Percentage- **Question code: 34-K171.**
- Ratio and Proportion- **Question code: 23-K193.**

Unit 3

Calculations

- Subtraction- **Question code: 7K181.**
- Arithmetic - Decimal Addition- **Question code: 14-K161.**
- Subtraction - Decimals. **Question code: 16K181.**

Fractions, Decimals and Percentages

- Adding and Subtracting Fractions- **Question code: 26-K191.**
- Addition - Fractions- **Question code: 30-K171.**
- Multiplying Fractions- **Question code: 35-K191.**

Geometry

- Coordinates- **Question code: 10-K183.**
- Scale Drawing- **Question code: 9-K183.**
- Scale Drawings- **Question code: 13-K192.**

Number and Place Value

- Ordering Numbers- **Question code: 6-K172.**
- Estimation- **Question code: 19-K182.**
- Square and Prime Numbers- **Question code: 18-K173.**

Ratio, Proportion and Algebra

- Multiplication Grid- **Question code: 3-K172.**
- Arithmetic - Subtraction- **Question code: 8-K161.**
- Missing Numbers- **Question code: 7-K172.**

Unit 4

Calculations

- Written Division- Question code: 10-K191.
- Arithmetic - Division- Question code: 3-K161.
- Word Problem- Question code: 1-K193.

Fractions, Decimals and Percentages

- 'Of' Question- **Question code: 19K181.**
- Addition - Fractions- **Question code: 3-K171.**
- Fractions, Decimals and Percentages- **Question code: 20-K192.**

Measure

- Time- **Question code: 14-K163.**
- Time - Problem- **Question code: 21-K183.**
- Volume- **Question code: 7-K192.**

Number and Place Value

- Numbers- **Question code: 2-K172.**
- Rounding Off- **Question code: 14-K192.**
- Estimating Lengths- **Question code: 20-K182.**

Ratio, Proportion and Algebra

- Percentage Problems- **Question code: 15-K192.**
- Missing Number- **Question code: 18-K162.**
- Missing Digits- **Question code: 3-K162.**

Unit 5

Fractions, Decimals and Percentages

- Subtraction - Mixed Number. **Question code: 35K181.**
- Division- Fractions. **Question code: 27-K171.**
- Equivalent Numbers- **Question code: 7-K182.**

Geometry

- Angles- **Question code: 7-K163.**
- Angles- **Question code: 17-K162.**
- Shading Shapes- **Question code: 10-K162.**

Measure

- Temperature Problem- **Question code: 15-K162.**
- Train Timetable- **Question code: 6-K173.**
- Perimeters and Areas- **Question code: 21-K192.**

Number and Place Value

- Number Cards- **Question code: 3-K183.**
- Ordering Decimals- **Question code: 5-K163.**
- Roman Numerals- **Question code: 15-K172.**

Ratio, Proportion and Algebra

- Arithmetic - Percentages- **Question code: 29-K161.**
- Table with Missing Numbers- **Question code: 5-K172.**
- Missing Digits- **Question code: 4-K183.**

Unit 6

Calculations

- Written Multiplication- **Question code: 17-K191.**
- Multiplication - Whole Numbers- **Question code: 8-K171.**
- Rounding Numbers- **Question code: 19-K173.**

Fractions, Decimals and Percentages

- Addition - Fractions- **Question code: 26-K171.**
- Subtraction - Fractions- **Question code: 2K181.**
- Fractions and Decimals- **Question code: 17-K173.**

Geometry

- Equilateral Triangle- **Question code: 14-K183.**

Number and Place Value

- Money - **Question code: 2-K162.**
- Ordering Numbers- **Question code: 3-K192.**

Ratio, Proportion and Algebra

- Equivalent Fractions- **Question code: 7-K162.**
- Sequence- **Question code: 6-K182.**
- Missing Numbers- **Question code: 1-K183.**
- Combinations- **Question code: 2-K183.**

Statistics

- The Mean- **Question code: 22-K192.**
- Bar Chart- **Question code: 1-K172.**